

Hydraulic Motor Driven Flail Mower EXF600, EXF800, EXF1200



Operator's Manual

Important Safety information

Safety at all times

Thoroughly read and understand the instructions given in this manual before operation. Refer to the "Safety Decal", read all instructions noted on them.

Do not allow anyone to operate this equipment who has not fully read and comprehended this manual and who has not been properly trained in the safe operation of the equipment.

- Operator should be familiar with all functions of the unit.
- Operate implement from the driver's seat only.
- Make sure all guards and shields are in place and secured before operating the implement.
- Do not leave tractor or implement unattended with engine running.
- Dismounting from a moving tractor could cause serious injury or death.
- Do not stand between tractor and implement during hitching.
- Keep hands, feet, and clothing away from power-driven parts.
- Wear snug fitting clothing to avoid entanglement with moving parts.
- Watch out for wires, trees, etc., when raising implement. Make sure all persons are clear of working area.
- Turning tractor too tight may cause implement to ride up on wheels. This could result in injury or equipment damage.
-

Look For The Safety Alert Symbol

The SAFETY ALERT SYMBOL indicates there is a potential hazard to personal safety involved and extra safety precaution must be taken. When you see this symbol, be alert and carefully read the message that follows it. In addition to design and configuration of equipment, hazard control and accident prevention are dependent upon the awareness, concern, prudence and proper training of personnel involved in the operation, transport, maintenance and storage of equipment.

Be aware of signal words

A signal word designates a degree or level of hazard seriousness. The signal words are:



DANGER

Indicates an imminently hazardous situation which, if not avoided, will result in death or serious injury. This signal word is limited to the most extreme situations, typically for machine components that, for functional purpose, cannot be guarded.



WARNING

Indicates a potentially hazardous situation which, if not avoided, could result in death or serious injury, and includes hazards that are exposed when guards are removed. It may also be used to alert against unsafe practices.



Indicates a potentially hazardous situation which, if not avoided, may result in minor or moderate injury. It may also be used to alert against unsafe practices.

For you protection

- Thoroughly read and understand the “safety label” section, read all instructions noted on them.

Shutdown and storage

- Lower machine to ground, put tractor in park, turn off engine, and remove the ignition key.
- Detach and store implements in a area where children normally do not play. Secure implement by using blocks and supports.

Use safety lights and devices

- Slow moving tractors, self-propelled equipment, and towed implements can create a hazard when driven on public roads. They are difficult to see, especially at night.
- Flashing warning lights and turn signals are recommended whenever driving on public roads. Use lights and devices provided with implement.

Transport machinery safely

- Comply with state and local laws.
- Maximum transport speed for implement is 20 mph. Do not exceed. Never travel at a speed which does not allow adequate control of steering and stopping. Some rough terrain require a slower speed.
- Sudden braking can cause a towed load to swerve and upset. Reduce speed if towed load is not equipped with brakes.
- Use the following maximum speed - tow load weight ratios as a guideline:
20 mph when weight is less than or equal to the weight of tractor.
10 mph when weight is double the weight of tractor.
- **IMPORTANT:** Do not tow a load that is more than double the weight of tractor.

Keep riders off machinery

- Riders obstruct of operator's view, they could be struck by foreign objects or thrown from the machine.
- Never allow children to operate equipment.

Practice safe maintenance

- Understand procedure before doing work. Use proper tools and equipment. refer to Operator's Manual for additional information.
- Work in a clean dry area.
- Lower the implement to the ground, put tractor in park, turn off engine, and remove key before performing maintenance.
- Allow implement to cool completely.

- Do not grease or oil implement while it is operation.
- Inspect all parts. Make sure parts are in good condition and installed properly.
- Remove buildup of grease, oil or debris.
- Remove all tools and unused parts from implement before operation.

Prepare for emergencies

- Be prepared if a fire starts.
- Keep a first aid kit and fire extinguisher handy.
- Keep emergency numbers for doctor, ambulance, hospital and fire department near phone.

Wear protective equipment

- Protective clothing and equipment should be worn.
- Wear clothing and equipment appropriate for the job. Avoid loose fitting clothing.
- Prolonged exposure to loud noise can cause hearing impairment or hearing loss. Wear suitable hearing protection such as earmuffs or earplugs.
- Operating equipment safely requires the full attention of the operator. Avoid wearing radio headphones while operating machinery.

Avoid high pressure fluids hazard

- Escaping fluid under pressure can penetrate the skin causing serious injury.
- Avoid the hazard by relieving pressure before disconnecting hydraulic lines.
- Use a piece of paper or cardboard, not body parts, to check for suspected leaks. Wear protective gloves and safety glasses or goggles when working with hydraulic systems.
- If an accident occurs, see a doctor immediately. Any fluid injected into the skin must be treated within a few hours or gangrene may result.

Safety Labels

Your Flail Mower comes equipped with all safety labels in place. They were designed to help you safely operate your implement. Read and follow their directions.

1. Keep all safety labels clean and legible.
2. Replace all damaged or missing labels. To order new labels go to your nearest Jonova dealer or visit our dealer locator at Jonova.com.
3. Some new equipment installed during repair requires safety labels to be affixed to the replaced component as specified by Jonova. When ordering new components make sure the correct safety labels are included in the request.

Introduction

Jonova welcomes you to the growing family of new product owners. This implement has been designed with care and built by skilled workers using quality materials. Proper assembly, maintenance, and safe operating practices will help you get years of satisfactory use from the machine.

Application

The Flail Mowers are designed for Category 1 - three point hitch or Quick-Hitch System mounting. These Fixed Bar Flail Mowers are ideal for ripping, leveling, finish grading, and backfilling applications at feedlots, outdoor arenas, building sites, and maintenance operations on farm and ranch lanes or roadways.

Using This Manual

- This Operator's Manual is designed to help familiarize you with safety, assembly, operation, adjustments, troubleshooting, and maintenance. Read this manual and follow the recommendations to help ensure safe and efficient operation.
- The information contained within this manual was current at the time of printing. Some parts may change slightly to assure you of the best performance.
- To order a new Operator's or Parts Manual contact your authorized dealer. Manuals can also be printed from the Jonova Service & Support Center by your dealer.

Terminology

"Right" or "Left" as used in this manual is determined by facing the direction the machine will operate while in use unless otherwise stated.

Definitions

Note : A special point of information that the operator must be aware of before continuing.

Important : A special point of information related to its preceding topic. The intention is that this information should be read and noted before continuing.

Owner Assistance

The Warranty Registration card should be filled out by the dealer at the time of purchase. This information is necessary to provide you with quality customer service. If customer service or repair parts are required contact a dealer. A dealer has trained personnel, repair parts and equipment needed to service the machine.

The parts on your machine have been specially designed and should only be replaced with genuine parts.

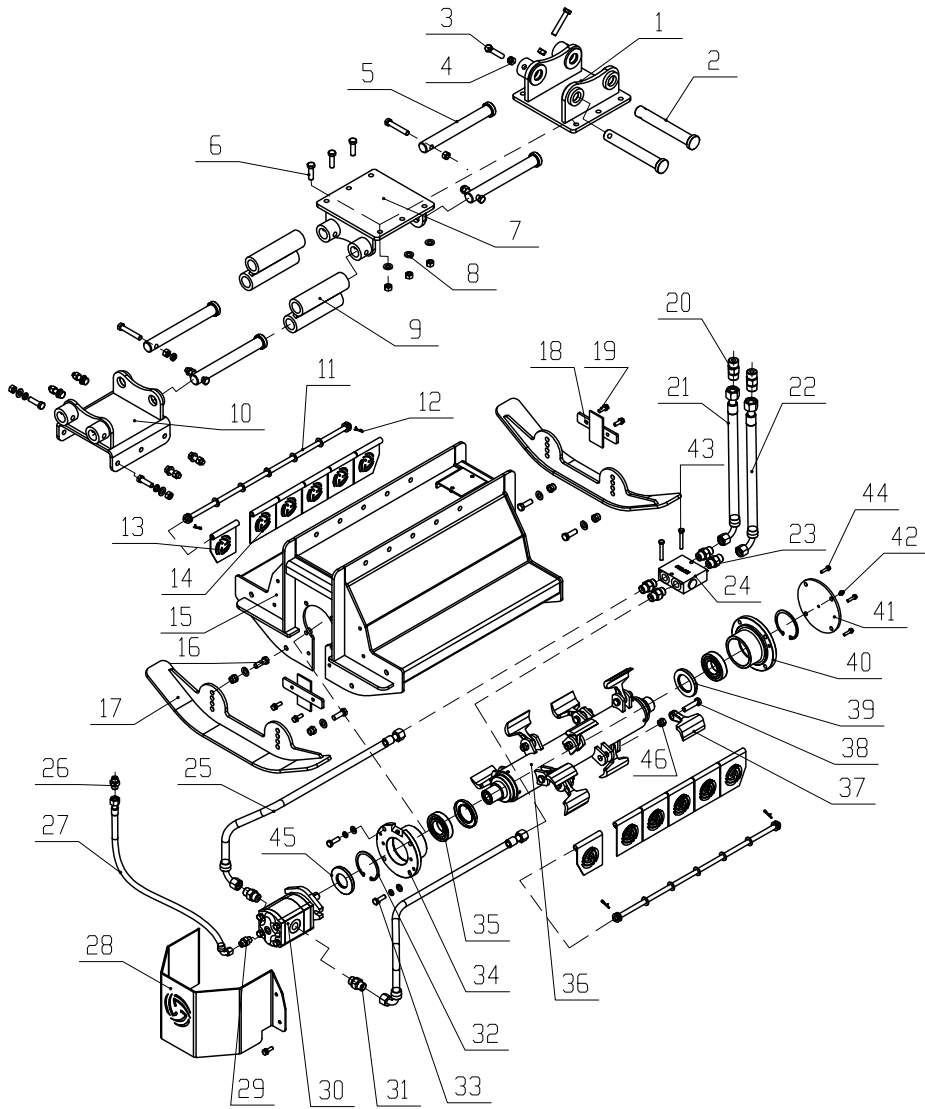
Serial Number Plate

For prompt service always use the serial number and model number when ordering parts

from your dealer. Be sure to include your serial and model numbers in correspondence also.

Model	EXF600	EXF800	EXF1200
Cutting width	600mm	800mm	1200mm
Weight	150KG	272KG	305KG
Hydraulic Flow	30L/min-40L/min, 20MPa	40L/min-60L/min, 20Mpa	60L/min-80L/min, 20Mpa
Number of hammers	12 pcs with 350g hammers	14pcs with 800g hammers	18 pcs with 800g hammers
Rotor diameter	90mm	108mm	108mm
Direction of Rotation	One-Way		
Applicable excavator	2.5T	3T-5T	6T-8T
Drive type	Without belt	With belt	With belt

Parts illustration



EXF600			
No.	Code	Description	Qty

1	EXF600.01	hook weldment	1
2	EXF600.12	Pin 1	2
3	GB/T 5782-2000	Bolt M12*70	6
4	GB/T 6182-2000	Locking Nut M12	28
5	EXF600.13	Pin 2	4
6	GB/T 5783-2000	Bolt M12*40	12
7	EXF600.02	Connection Part1	1
8	GB/T 97.1-85	Washer 12	35
9	EXF600.06	connection Part Weldment	2
10	EXF600.03	Connection Weldment2	1
11	EXF600.08.02	shaft bar for fender	2
12		B type Pin	4
13	EF100.00.122A	Fender	4
14	EF100.00.122	Fender	8
15	EXF600.07	Mower deck Weldment	1
16	GB/T 5783-2000	Bolt M12*35	4
17	EXF600.04	Skids Weldment	2
18	EXF600.09	Plate for belt cover	2
19	GB/T 5783-2000	Bolt M8*25	8
20	EXF1200.21.1	Couple	2

21	EXF800.21.1	Oil Pipe 01	1
22	EXF800.21.2	Oil Pipe 03	1
23	GE15LR1/2ED	Connection	4
24	EXF600/800	Valve	1
25	EXF600.21.1	Oil Pipe 04	2
26	EXF1200.21.3	Couple	1
27	EXF1200.21.4	Oil pipe 02	1
28	EXF600.08.01	Protection Plate for motor	1
29	GE08LR1/4ED	Couple	1
30	CME-F316-ALPS	Hydraulic Gear Motor	1
31	GE15LM18x1.5ED	Couple	2
32	GB/T 893.1	Clip 80	2
33	GB/T 5783-2000	Bolt M10*30	2
34	EXF600.08.04	Bearing seat 1	1
35	GB/T 281-94	Bearing 1208	2
36	EXF600.11	rotor weldment	1
37	EF100.00.102B	350g hammers	10
38	GB/T 5785-2000	Bolt M12*1.25*50	10
39	GB/T 13871.1-2007	Oil seal	2
40	EXF600.08.03	Bearing seat 2	1

41	EXF600.10	Cover	1
42	JB/T 7940.1-1995	Grease Nipple	2
43	GB/T 5783-2000	Bolt M8*55	2
44	GB/T 5783-2000	Bolt M10*40	8
45	GB/T 13871.1-2007	Oil seal	1
46	GB/T 889.2-2000	Locking Nut M12*1,25	10

EXF1200&EXF800

No.	Code	Description	Qty
1	EXF1200.2	Hook weldment	1
2	GB/T 5783	Bolt M16*40	12
3	GB/T 97.1	Washer 16	14
4	GB/T 889.1	Locking Nut M16	20
5	EXF1200.18	Pin	2
6	GB/T 5782	Bolt M6*100	2
7	GB/T 5782	Bolt M12*70	4
8	EXF1200.3	Connection 2 weldment	1
9	EXF1200.19	Pin	4
10	EXF1200.4	Connection 3 weldment	1

11	EXF1200.5	down connection weldment	1
12	EXF1200.20	shaft abr	2
13	GB/T 97.1	washer 12	48
14		R Pin 3.2	4
15	EF100.00.122A	fender	4
16	EF100.00.122	wide fender	20
17	EXF1200.1	mower deck	1
18	EXF1200.14	cover	1
19	GB/T 5783	Bolt M8*20	16
20	EXF1200.10	Cover weldment	2
21	EXF1200.6	skid weldment	2
22	GB/T 5783	Bolt M12*30	4
23	JB/T 7940.1	Grease nipple M6	1
24	GB/T 5783	Bolt M12*40	8
25	EXF1200.15	bearing cover	1
26	EXF1200.12	Motor protection plate	1
27	EXF1200.13	cover	1
28	EFGC155.27	small pulley	1
29	JB/T 11544	power lock 04	2
30	GB/T 7810	Bearing UCFU207	2
31	EXF1200.9	ring for grass	2

32	GB/T 70.1	Bolt M8*25	4
33	EXF1200.8	rotor weldment	1
34	EXF1200.25	hammer	18
35	GB/T 889.2	Locking Nut M16*1.5	18
36	GB/T 5785	Bolt M16*1.5*85	18
37	EXF1200.21.2	Oil pipe 01	1
38	EXF1200.21.3	couple	1
39	EXF1200.21.4	Oil pipe 02	1
40	GB/T 5783	Bolt M12*50	4
41	EXF1200.21.1	couple	2
42	EXF1200.21.5	Oil pipe 03	1
43	GB/T 5782	Bolt M8*60	2
44	EXF1200.22	Valve	1
45	EXF1200.21.6	Oil pipe 04	2
46	GB/T 70.1	Bolt M10*30	8
47	EXF1200.21.7	Connection	2
48	AS 568	O ring 219	2
49	CMGh2040-BFΦS	gear motor	1
50	GB/T 893.1	Circlip	1
51	GB/T 276	Bearing 6208-Z	2
52	GB/T 70.1	Bolt M12*50	4
53	LM180.17-1	connection	1

54	EXF1200.7	tension plate	1
55	EXF1200.17-1	connection shaft	1
56	GB/T 1387.1	Oil seal 40*55*8	1
57	EFGC155.31	big pulley	1
58	GB/T 11544	belt SPB1016	3
59	EXF1200.11	cover	1
60	GB/T 889.1	Locking Nut M12	16
61	GE18LR3/4ED	Couple	4
62	GE08LR3/8ED	Couple	2